

End Caps



Bio Cap®

The Bio Cap is the only non-metallic cap with a built-in tab for quick removal, which reduces potential damage to sanitary flanges.

The tab eliminates the tendency to use non-sanitary tools, including screwdrivers and pliers, to assist in cap removal. The cap is delivered with permanent size and lot number identification to ensure proper use and easy traceability.

Bio Cap available in PP only.

Flat End Cap

The Flat End Cap has the same uses as the Bio Cap, but its designed without the built-in tab. Flat End Caps may also be modified to accept female threads and be integrated into dip tube fabrications.

Flat End Cap available in both PP and PVDF.

Bio Cap Features:

- Built-in tab for easy removal
- Disposable
- Non-metallic
- Autoclave or irradiate to sterilize
- Size and lot number permanently molded onto the component
- Constructed of polypropylene with a drug master file resin that conforms to FDA and USP Class VI requirements.
- Recommended working pressure, 150psi @ 70° F.

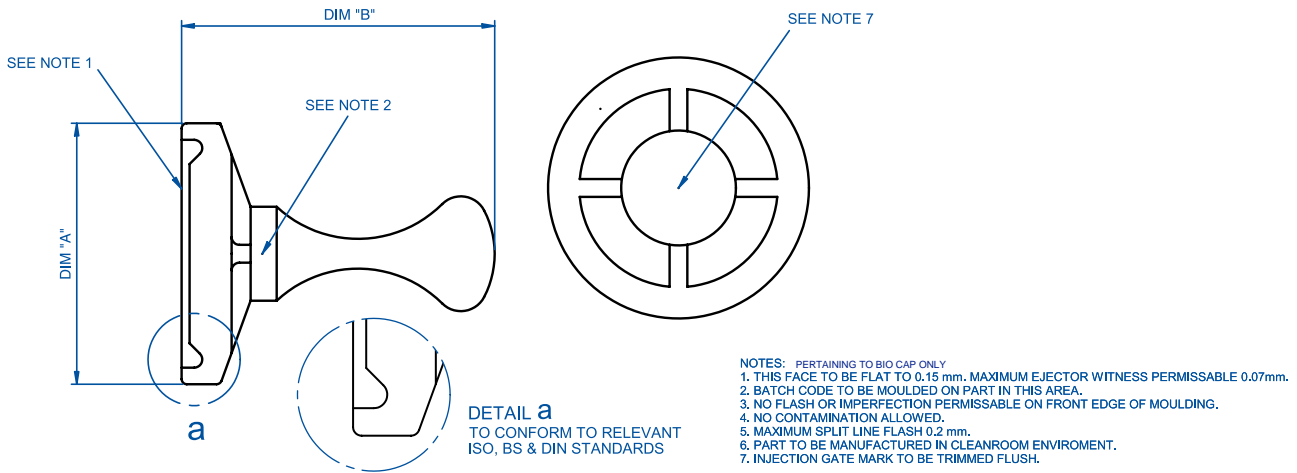
Use the Bio Cap and Flat End Cap with:

- Bioprocess containers
- Bioreactors
- Fermentors
- Flexible packaging systems
- Filling machines
- Filtration and purification systems
- Mixing containers and vessels
- Rigid piping systems
- Sampling ports
- Tubing sets

End Caps

Bio Cap® Flat End Cap

Dimensional and Physical Properties



Size	Part Number	Dim "A"	Dim "B" (d)
Bio Cap			
.5-.75"	PPCAP075-T	.985"	1.182"
1-1.5"	PPCAP150-T	1.989"	1.182"
Flat End Cap			
.5-.75"	(PP, PVDF) CAP075	.992"	.188"
1-1.5"	(PP, PVDF) CAP150	1.984"	.240"
2"	(PP, PVDF) CAP200	2.516"	.240"
2.5"	(PP, PVDF) CAP250	3.047"	.240"
3"	(PP, PVDF) CAP300	3.579"	.240"
4"	(PP, PVDF) CAP400	4.682"	.240"
6"	(PP, PVDF) CAP600	6.57"	.480"

Resin Data	Tensile Strength	Flexural Modulus	Hardness	Heat Deflection	Water Absorption	Maximum Recommended Working Temperature F°
Polypropylene used in Bio Cap	29.5 Mpa (50mm/min) ISO 527-2	1100 Mpa (1mm/min) ISO 527-2	94, R-scale, Rockwell ISO 2039-2	90° C @ .45 Mpa ISO 75-2		180° F
Polypropylene used Flat End Cap	3900 psi (2 in/min) ASTM D 638	160000 psi ASTM D 790	80, R-scale, Rockwell ASTM D-785	87.8° F @ 66 psi ASTM D 648	.01% (24 hour duration)	180° F
PVDF used in Flat End Cap	5000-7000 psi ASTM D 638	240000-335000 psi ASTM D 790	76-80 Shore D ASTM D 2240	257-284° F @ 66 psi ASTM D 648	.01-.03% (24 hour duration)	240° F

Physical properties provided as general guidelines only. It is the end-users responsibility to ensure that the above mentioned products are compatible with the intended application and that the products are in compliance with all applicable regulatory requirements for use. User assumes all risk of usage.

For additional information please contact:



17 South Street, Havant, Hampshire, UK, PO9 1BU.
 Tel: +44 (0) 2392 499000 Fax: +44 (0) 2392 499001
www.biopuretech.com