

Sanitary Diaphragm Valve

Manually operated

Description

The type 611 is a compact valve with many features which make them ideal for pharmaceutical and bio-processing applications.

Standard Features

- Compact design
- Glass filled polypropylene bonnet
- Visual position indicator
- FDA compliant diaphragms
- Body material 316L stainless steel
- Triclamp®, O.D. Tubing, ISO, and DIN end connections
- Sizes 3/8" - 3/4"

Available Options

Special connections

Hose barb, tube extensions, Swagelok®, Cajon VCR®, Ingold®, and others available upon request.

Fabrications

Cluster valve assemblies for both horizontal and vertical orientations, and custom fabrications upon request.

Materials

AL-6XN®, Hastelloy®, Titanium®, and others available upon request.

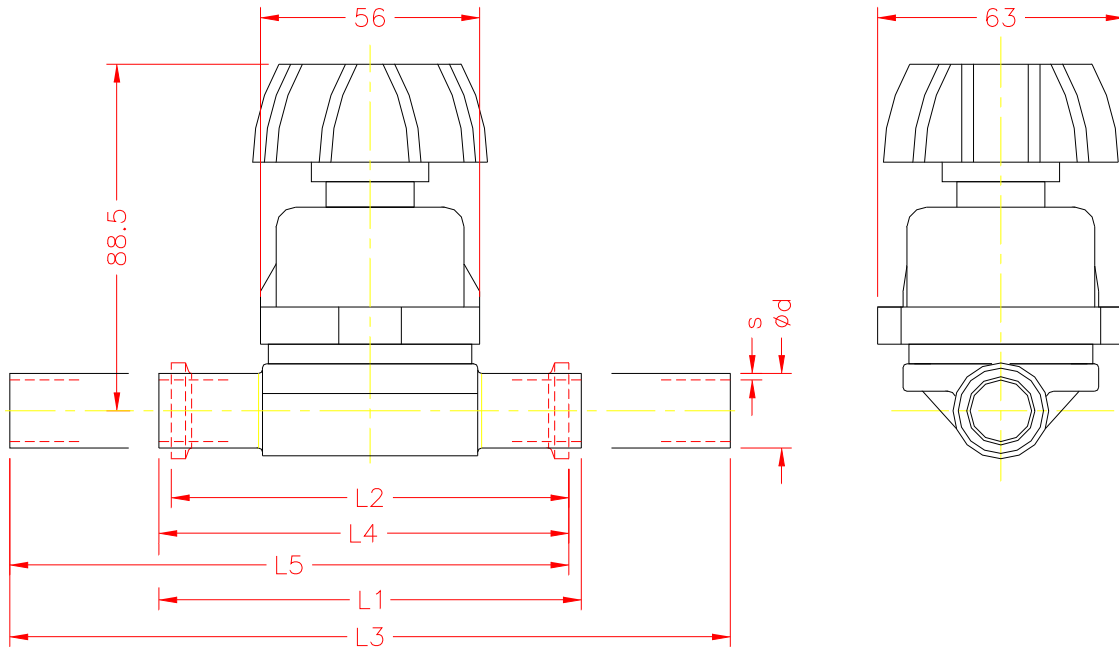
Typical Applications

- Pharmaceutical manufacturing
- Bioprocessing
- Cosmetic
- Brewery Service
- Food and Beverage
- Semiconductor
- High Purity Chemicals



Type 611

Type 611 Dimensional Data



Take Out Dimension For Standard Connections

Size	DN	Units	Con. Ref. No.		(59)	(80)	(94)	(93)	(95)
			Ød	s	L1	L2	L3	L4	L5
3/8	10	mm	9.53	1.25	108.00	88.90	184.20	98.45	136.55
		in	0.375	0.049	4.252	3.500	7.252	3.876	5.376
1/2	15	mm	12.70	1.65	108.00	88.90	184.20	98.45	136.55
		in	0.500	0.065	4.252	3.500	7.252	3.876	5.376
3/4	20	mm	19.05	1.65	108.00	101.60	184.20	104.80	142.90
		in	0.750	0.065	4.252	4.000	7.252	4.126	5.626

- L1 = Connection Code 59 = Standard butt-weld
- L2 = Connection Code 80 = Standard clamp
- L3 = Connection Code 94 = Standard butt-weld extension (AWF)
- L4 = Connection Code 93 = Standard clamp X butt-weld
- L5 = Connection Code 95 = Standard clamp X butt-weld extension (AWF)

Optional Spigot Dimensions

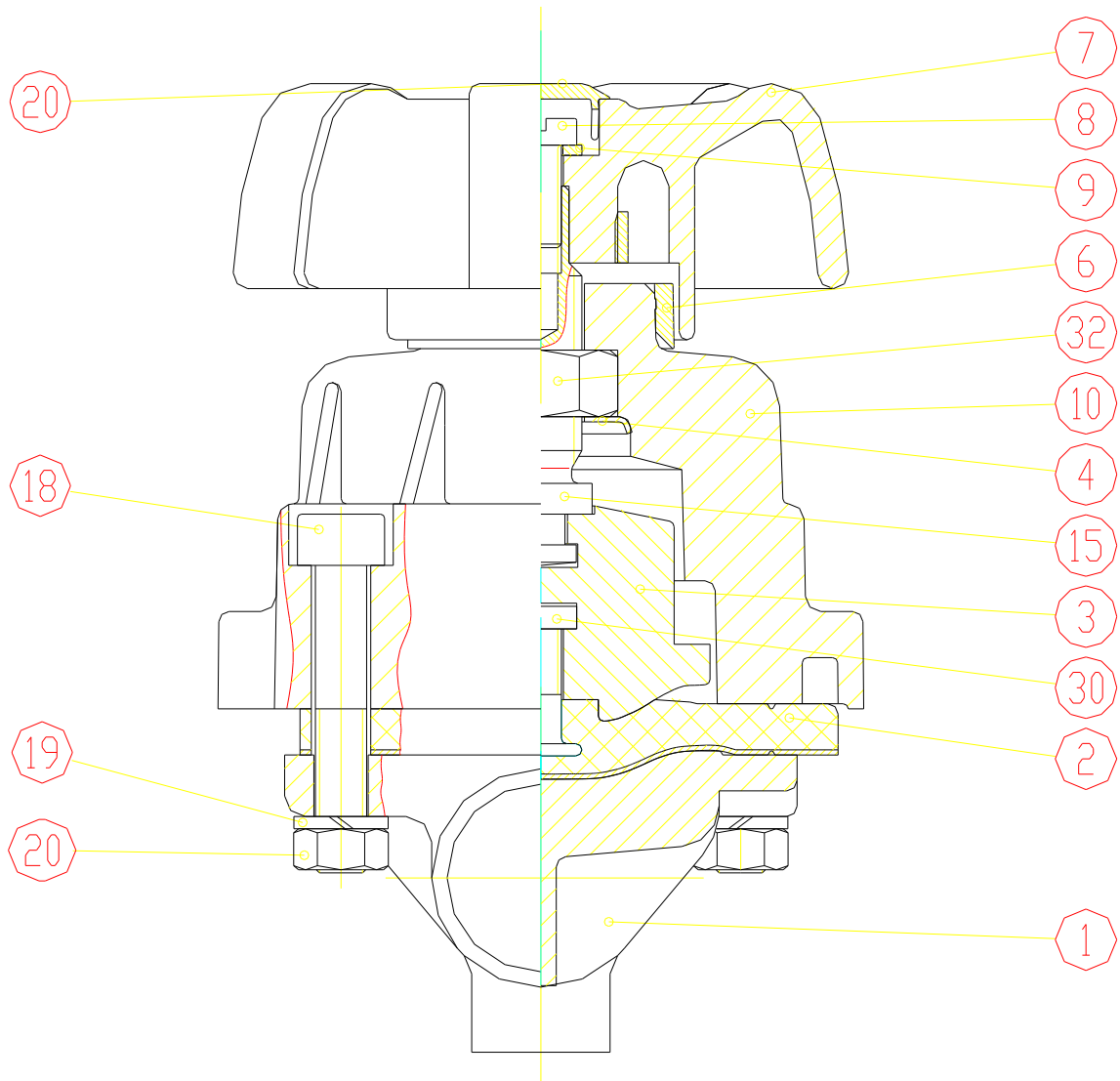
Connection Reference No.		DIN 0	DIN 11850 Series 1 16	DIN 11850 Series 2 17	DIN 11850 Series 3 18	ISO 60						
Size	DN	L ₁	s	ø d	s	ø d	s	ø d	s	ø d	s	ø d
3/8"	10	108	-	-	1	12	1,5	13	2	14	1,6	17,2
1/2"	15	108	1,5	18	1	18	1,5	19	2	20	1,6	21,3

Drain Angles

Size	DN	Degrees
3/8"	10	60°
1/2"	15	65°
3/4"	20	70°

Drain angles are for BS O.D. Tubing only.

Type 611 Spare Parts



ITEM	PART
1	Valve Body
2	Diaphragm
3	Compressor
4	Bearing Plate
6	Position Indicator
7	Hand Wheel
8	Bolt
9	Washer
10	Bonnet
15	Threaded Spindle
18	Bolt
19	Washer
20	Cap
30	Nut
32	Hex Nut