

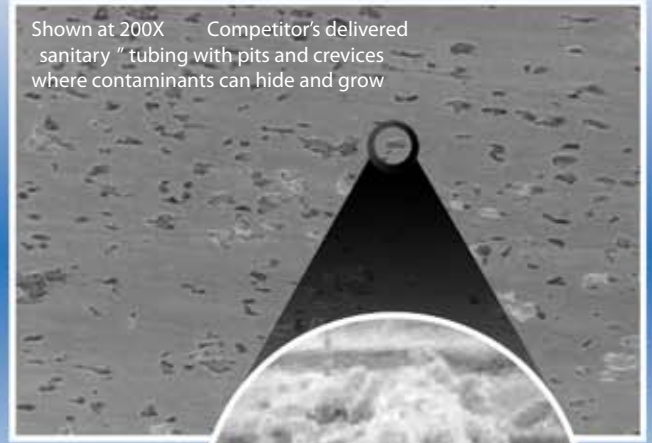
Quality isn't in the sample, it's in the deliverable



Shown at 200X — RathGibson's truly sanitary tubing with smooth interior surface that resists microbial growth



Shown at 200X — Competitor's delivered sanitary tubing with pits and crevices where contaminants can hide and grow



Don't be fooled by tube samples. Poor quality delivered tubing can have pits and crevices in which contaminants can hide. Trust RathGibson's truly sanitary tubing for food, dairy, and beverage applications.

- All of RathGibson's truly sanitary tubing is manufactured as ASTM A270-S2 directly off our mills, not as industrial grade tubing and polished
- RathGibson utilizes the industry's finest stainless steel materials made exclusively to our proprietary melt criteria for maximum weldability
- RathGibson's polishing processes result in less tearing and pitting of product contact surfaces
- Smoother surfaces minimize contamination and improve cleanability
- Our Laser & TIG full-finishing welding processes ensure weld seam integrity
- RathGibson only sells through the sanitary industry's most knowledgeable distributors
- 600,000 feet of inventory is available for immediate shipment

For truly sanitary tubing that is backed by our technical expertise and unmatched customer service, insist on RathGibson.

RathGibson's truly sanitary tubing

Finish: 20 μ -in Ra (0.5 μ m) ID max. and 30 μ -in Ra (0.8 μ m) OD max. surface roughness

Outer diameter (OD): 1/2" (12.7 mm) to 8" (203.2 mm)

Lengths: 20' (6.1 m)

Alloys: 304L and 316L

www.RathGibson.com

RathGibson's truly sanitary tubing is proudly distributed by:

Tri-Canada Industries Ltd.
Mississauga, Ontario
905-677-9000
www.tricanada.com



make the connection