

Distributed by:

Tri-Canada

Tel: 905.677.9000 • Toll Free: 1.800.486.7863

www.tricanada.com

GEMÜ®

Diaphragm Valve, Metal

Construction

The GEMÜ 611 and 671 manually operated 2/2-way metal diaphragm valves have a low maintenance plastic bonnet and an integral optical position indicator as standard.

Features

- Suitable for inert and corrosive* liquid and gaseous media
- Chemical resistance of bonnet
- Insensitive to particulate media
- Valve body and diaphragm available in various materials and designs
- Compact design (ideal when space is at a premium)

Advantages

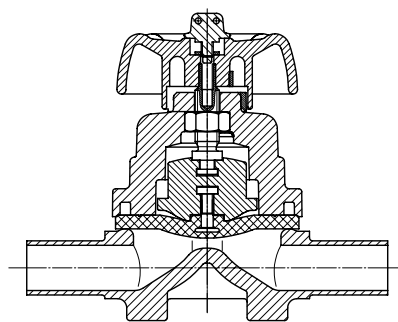
- Hermetic separation between medium and bonnet
- Optional flow direction
- Installation for an optimized draining is possible
- Optional accessories for 671:
 - Electrical remote indication that the valve is in the open position
 - Lockable handwheel clamp

*see information on working medium on page 2

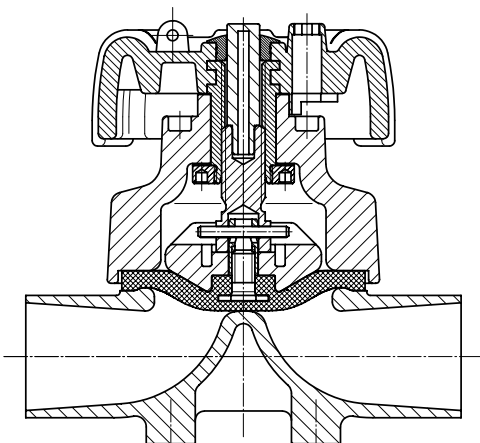


GEMÜ 611

Sectional drawing



GEMÜ 611



GEMÜ 671



GEMÜ 671

GEMÜ® 611, 671

Technical data

Working medium

Corrosive, inert, gaseous and liquid media which have no negative impact on the physical and chemical properties of the body and diaphragm material.

Temperatures

Media temperature -10 ... 80 °C

Ambient temperature 0 ... 60 °C

Type	Diaphragm size	Operating pressure [bar]	
		EPDM	PTFE
GEMÜ 611	10	0 - 10	0 - 6
GEMÜ 671	25 - 100	0 - 10	0 - 6

All pressures are gauge pressures. Operating pressure values were determined with static operating pressure applied on one side of a closed valve. Sealing at the valve seat and atmospheric sealing is ensured for the given values. Information on operating pressures applied on both sides and for high purity media on request.

Kv values [m³/h]

Type	MG	DN	DIN	EN 10357 Series B	EN 10357 Series A	DIN 11850 Series 3	SMS 3008	ASME BPE	ISO 1127 / EN 10357 Series C
			Code 0	Code 16	Code 17	Code 18	Code 37	Code 59	Code 60
GEMÜ 611	10	10	-	2.4	2.4	2.4	-	2.2	3.3
		15	3.3	3.8	3.8	3.8	-	2.2	4.0
		20	-	-	-	-	-	3.8	-
GEMÜ 671	25	15	4.1	4.7	4.7	4.7	-	-	7.4
		20	6.3	7.0	7.0	7.0	-	4.4	13.2
		25	13.9	15.0	15.0	15.0	12.6	12.2	16.2
	40	32	25.3	27.0	27.0	27.0	26.2	-	30.0
		40	29.3	30.9	30.9	30.9	30.2	29.5	32.8
	50	50	46.5	48.4	48.4	48.4	51.7	50.6	55.2
		65	-	-	-	-	62.2	62.8	-
	80	65	-	-	77.0	-	68.5	68.5	96.0
		80	-	-	111.0	-	80.0	87.0	111.0
	100	100	-	-	194.0	-	173.0	188.0	214.0

Kv values determined acc. to DIN EN 60534, inlet pressure 5 bar, Δp 1 bar, stainless steel valve body and soft elastomer diaphragm.

The Kv values for other product configurations (e.g. other diaphragm or body materials) may differ. In general, all diaphragms are subject to the influences of pressure, temperature, the process and their tightening torques. Therefore the Kv values may exceed the tolerance limits of the standard.

MG = diaphragm size

Order data

Valve type	Code
GEMÜ 611 diaphragm size 10	611
GEMÜ 671 diaphragm size 25 - 100	671

Body configuration	Code
2/2-way body	D

Connection	Code
Butt weld spigots	
Spigots DIN	0
Spigots EN 10357 series B	16
Spigots EN 10357 series A	17
Spigots DIN 11850 series 3	18
Spigots DIN 11866 series A	1A
Spigots DIN 11866 series B	1B
Spigots JIS-G 3447	35
Spigots JIS-G 3459	36
Spigots SMS 3008	37
Spigots BS 4825 Part 1	55
Spigots ASME BPE	59
Spigots ISO 1127 / EN 10357 series C	60
Spigots ANSI/ASME B36.19M Schedule 10s	63
Spigots ANSI/ASME B36.19M Schedule 40s	65
Threaded connections	
Threaded sockets DIN ISO 228	1
Threaded sockets NPT	31
Threaded spigots DIN 11851	6
One side threaded spigot, other side cone spigot and union nut, DIN 11851	62
Aseptic unions on request	
Flanges (GEMÜ 671)	
Flanges EN 1092 / PN16 / form B, length EN 558, series 1, ISO 5752, basic series 1	8
Flanges ANSI Class 150 RF, length MSS SP-88	38
Flanges ANSI Class 125/150 RF, length EN 558, series 1, ISO 5752, basic series 1	39
Clamp connections	
Clamps ASME BPE for pipe ASME BPE, length ASME BPE	80
Clamp DIN 32676 series B for pipe EN ISO 1127, length EN 558, series 7	82
Clamps ASME BPE for pipe ASME BPE, length EN 558, series 7	88
Clamps DIN 32676 series A for pipe DIN 11850, length EN 558, series 7	8A
Clamps SMS 3017 for pipe SMS 3008, length EN 558, series 7	8E
Overview of available valve bodies see page 13	

Valve body material	Code
EN-GJL-250 (GG 25)	8
CW617N (brass)	12
EN-GJS-400-18-LT (SG iron 40.3) PFA lined	17
EN-GJS-400-18-LT (SG iron 40.3) PP lined	18
1.4435 - BN2 (CF3M), investment casting Fe<0.5%	32
1.4435 (ASTM A 351 CF3M \triangle 316L), investment casting	34
1.4408, investment casting	37
1.4408, PFA lined	39
1.4435 (316L), forged body	40
1.4435 (BN2), forged body Fe<0.5%	42
1.4539, forged body	F4

Diaphragm material	Code
FPM	4
EPDM	13
EPDM	14
EPDM	17
PTFE/EPDM convex, PTFE loose MG 25 - MG 100	5E*
PTFE/EPDM, PTFE lamin. MG 10	52
Material complies with FDA requirements, except code 4 and 14	
*For use with valve bodies see page 13	

Control function	Code
Manually operated GEMÜ 611, 671	0
Manually operated (lockable handwheel) only GEMÜ 671	L

Bonnet version	Code
Bonnet size 2 for diaphragm size 25	2
Bonnet size 3 for diaphragm size 40	3
Bonnet size 4 for diaphragm size 50	4
Bonnet size 2Z for diaphragm size 25 Mounting for electrical position indicator GEMÜ 1215	2Z
Bonnet size 3Z for diaphragm size 40 Mounting for electrical position indicator GEMÜ 1215	3Z
Bonnet size 4Z for diaphragm size 50 Mounting for electrical position indicator GEMÜ 1215	4Z
Bonnet size 5Z for diaphragm size 80 Mounting for electrical position indicator GEMÜ 1215	5Z
Bonnet size 6Z for diaphragm size 100 Mounting for electrical position indicator GEMÜ 1215	6Z

Order data

Valve body surface finish, internal contour

	Hygienic class DIN 11866	Designation ASME BPE (2014)	Forged body Code 40, 42, F4	Investment casting Code 32, 34	Code
Ra ≤ 6,3 µm (250 µinch) for media wetted surfaces, blasted internal/external	-	-	-	X	1500
Ra ≤ 0,8 µm (30 µinch) for media wetted surfaces, mechanically polished internal	H3	SF3	X	X	1502
Ra ≤ 0,8 µm (30 µinch) for media wetted surfaces, electropolished internal/external	HE3	-	X	-	1503
Ra ≤ 0,6 µm (25 µinch) for media wetted surfaces, mechanically polished internal	-	SF2	X*	X*	1507
Ra ≤ 0,6 µm (25 µinch) for media wetted surfaces, electropolished internal/external	-	SF6	X*	-	1508
Ra ≤ 0,5 µm (20 µinch) for media wetted surfaces, mechanically polished internal	-	SF1	X*	-	1927
Ra ≤ 0,5 µm (20 µinch) for media wetted surfaces, electropolished internal/external	-	SF5	X*	-	1928
Ra ≤ 0,4 µm (15 µinch) for media wetted surfaces, mechanically polished internal	H4	-	X*	-	1536
Ra ≤ 0,4 µm (15 µinch) for media wetted surfaces, electropolished internal/external	HE4	-	X*	-	1537
Ra ≤ 0,4 µm (15 µinch) for media wetted surfaces, electropolished internal/external	-	SF4	X*	-	1929
Ra ≤ 0,25 µm (10 µinch) for media wetted surfaces, electropolished internal/external	HE5	-	X*	-	1516
Ra ≤ 0,25 µm (10 µinch) for media wetted surfaces, mechanically polished internal	H5	-	X*	-	1527

Ra acc. to DIN 4768; at defined reference points.

* For pipe inside diameter < 6 mm, the surface inside the spigot is Ra ≤ 0.8 µm.

Order data

Order example	671	25	D	60	34	17	0	2	1500
Type	671								
Nominal size		25							
Body configuration (code)			D						
Connection (code)				60					
Valve body material (code)					34				
Diaphragm material (code)						17			
Control function (code)							0		
Bonnet version (code)								2	
Surface finish (code)									1500

Dimensions [mm]

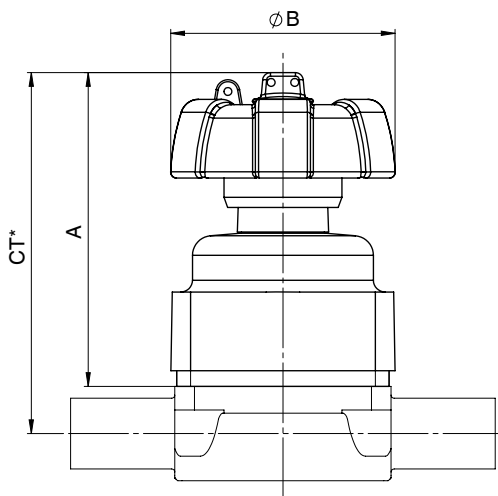
Bonnet dimensions

Type	MG	DN	Ø B	A	X*	A2	M	Weight [kg]
GEMÜ 611	10	10 - 20	60	80	-	-	-	0.15
GEMÜ 671	25	15 - 25	90	79	14	20	M16x1	0.4
	40	32 - 40	114	99	14	24	M16x1	0.6
	50	50 - 65	140	119	8	28	M16x1	1.0
	80	65 - 80	214	167	17	42	M16x1	3.8
	100	100	214	216	25	58	M16x1	5.1

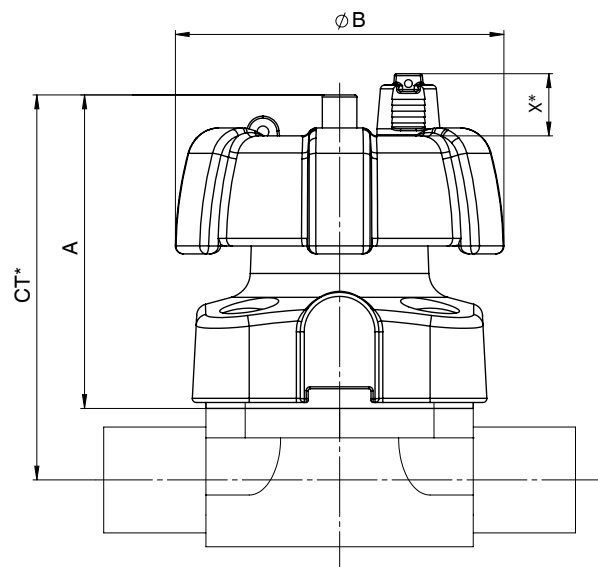
* only with control function code L

MG = diaphragm size

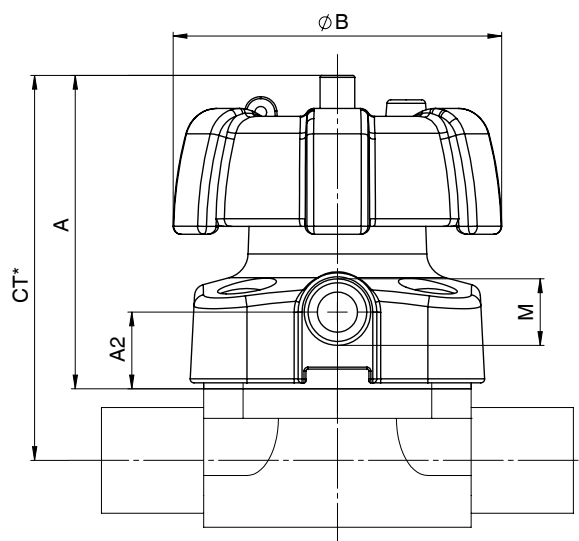
GEMÜ 611



GEMÜ 671



GEMÜ 671 Special version - Accessory Code Z



* CT = A + H1 (see body dimensions)

Body dimensions [mm]

**Butt weld spigots, connection code 0, 16, 17, 18,
Valve body material: investment casting (code 34), forged body (code 40, F4)**

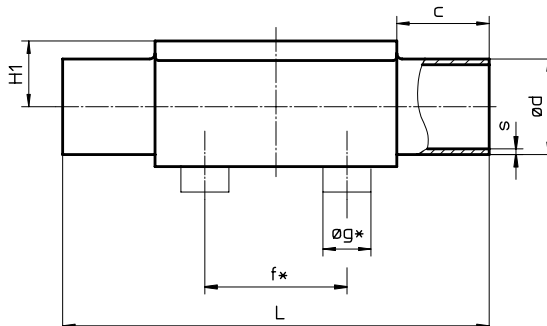
Typ	MG	DN	NPS	f*	øg*	L	c	H1*	H1**	DIN Series 0 Code 0		EN 10357 Series B Code 16		EN 10357 Series A Code 17		DIN 11850 Series 3 Code 18		Weight [kg]
										ød	s	ød	s	ød	s	ød	s	
GEMÜ 611	10	10	3/8"	30	13.5	108	25	12.5	-	-	12	1.0	13	1.5	14	2.0	0.30	
		15	1/2"	30	13.5	108	25	12.5	18	1.5	18	1.0	19	1.5	20	2.0	0.30	
		20	3/4"	30	13.5	108	25	12.5	-	-	-	-	-	-	-	-	0.30	
GEMÜ 671	25	15	1/2"	40	13.5	120	25	13.0	19.0	18	1.5	18	1.0	19	1.5	20	2.0	0.62
		20	3/4"	40	13.5	120	25	16.0	19.0	22	1.5	22	1.0	23	1.5	24	2.0	0.58
		25	1"	40	13.5	120	25	19.0	19.0	28	1.5	28	1.0	29	1.5	30	2.0	0.55
	40	32	1 1/4"	68	13.5	153	25	24.0	26.0	34	1.5	34	1.0	35	1.5	36	2.0	1.45
		40	1 1/2"	75	13.5	153	25	26.0	26.0	40	1.5	40	1.0	41	1.5	42	2.0	1.32
	50	50	2"	90	13.5	173	30	32.0	32.0	52	1.5	52	1.0	53	1.5	54	2.0	2.25
	80	65	2 1/2"	-	-	216	30	-	62.0	-	-	-	-	70	2.0	-	-	8.60
80		3"	-	-	254	30	-	62.0	-	-	-	-	85	2.0	-	-	8.00	
100	100	4"	-	-	305	30	-	76.0	-	-	-	-	104	2.0	-	-	24.10	

* only for investment cast design ** only for forged design MG = diaphragm size
For materials see overview on page 13

**Butt weld spigots, connection code 1A, 1B, 60
Valve body material: investment casting (code 34), forged body (code 40, F4)**

Typ	MG	DN	NPS	f*	øg*	L	c	H1*	H1**	DIN 11866 Series A Code 1A		DIN 11866 Series B Code 1B		ISO 1127 / EN 10357 Series C Code 60		Weight [kg]
										ød	s	ød	s	ød	s	
GEMÜ 611	10	10	3/8"	30	13.5	108	25	12.5	13	1.5	17.2	1.6	17.2	1.6	0.30	
		15	1/2"	30	13.5	108	25	12.5	19	1.5	21.3	1.6	21.3	1.6	0.30	
		20	3/4"	30	13.5	108	25	12.5	-	-	-	-	-	-	0.30	
GEMÜ 671	25	15	1/2"	40	13.5	120	25	13.0	19.0	19	1.5	21.3	1.6	21.3	1.6	0.62
		20	3/4"	40	13.5	120	25	16.0	19.0	23	1.5	26.9	1.6	26.9	1.6	0.58
		25	1"	40	13.5	120	25	19.0	19.0	29	1.5	33.7	2.0	33.7	2.0	0.55
	40	32	1 1/4"	68	13.5	153	25	24.0	26.0	35	1.5	42.4	2.0	42.4	2.0	1.45
		40	1 1/2"	75	13.5	153	25	26.0	26.0	41	1.5	48.3	2.0	48.3	2.0	1.32
	50	50	2"	90	13.5	173	30	32.0	32.0	53	1.5	60.3	2.0	60.3	2.0	2.25
	80	65	2 1/2"	-	-	216	30	-	62.0	70	2.0	76.1	2.0	76.1	2.0	8.60
80		3"	-	-	254	30	-	62.0	85	2.0	88.9	2.3	88.9	2.3	8.00	
100	100	4"	-	-	305	30	-	76.0	104	2.0	114.3	2.3	114.3	2.3	24.10	

* only for investment cast design ** only for forged design MG = diaphragm size
For materials see overview on page 13



Body dimensions [mm]

Butt weld spigots, connection code 35, 36, 37 Valve body material: investment casting (code 34), forged body (code 40, F4)

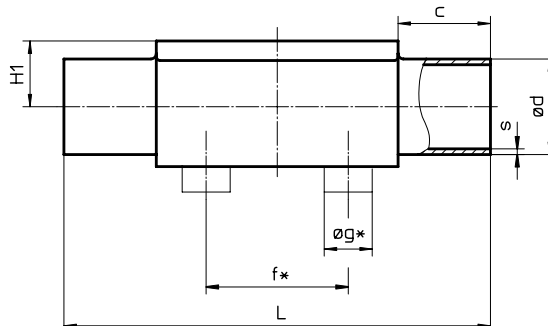
Typ	MG	DN	NPS	f*	øg*	L	c	H1*	H1**	JIS-G 3447 Code 35		JIS-G 3459 Code 36		SMS 3008 Code 37		Weight [kg]
										ød	s	ød	s	ød	s	
GEMÜ 611	10	10	3/8"	30	13.5	108	25	12.5		-	-	17.3	1.65	-	-	0.30
		15	1/2"	30	13.5	108	25	12.5		-	-	21.7	2.10	-	-	0.30
		20	3/4"	30	13.5	108	25	12.5		-	-	-	-	-	-	0.30
GEMÜ 671	25	15	1/2"	40	13.5	120	25	13.0	19.0	-	-	21.7	2.10	-	-	0.62
		20	3/4"	40	13.5	120	25	16.0	19.0	-	-	27.2	2.10	-	-	0.58
		25	1"	40	13.5	120	25	19.0	19.0	25.4	1.2	34.0	2.80	25.0	1.2	0.55
	40	32	1 1/4"	68	13.5	153	25	24.0	26.0	31.8	1.2	42.7	2.80	33.7	1.2	1.45
		40	1 1/2"	75	13.5	153	25	26.0	26.0	38.1	1.2	48.6	2.80	38.0	1.2	1.32
	50	50	2"	90	13.5	173	30	32.0	32.0	50.8	1.5	60.5	2.80	51.0	1.2	2.25
		65	2 1/2"	-	-	173	30	-	34.0	63.5	2.0	-	-	63.5	1.6	2.20
	80	65	2 1/2"	-	-	216	30	-	62.0	63.5	2.0	76.3	3.00	63.5	1.6	8.60
		80	3"	-	-	254	30	-	62.0	76.3	2.0	89.1	3.00	76.1	1.6	8.00
	100	100	4"	-	-	305	30	-	76.0	101.6	2.0	114.3	3.00	101.6	2.0	24.10

* only for investment cast design ** only for forged design MG = diaphragm size
For materials see overview on page 13

Butt weld spigots, connection code 55, 59, 63, 65 Valve body material: investment casting (code 34), forged body (code 40, F4)

Typ	MG	DN	NPS	f*	øg*	L	c	H1*	H1**	BS 4825 Code 55		ASME BPE Code 59		ANSI/ASME B36.19M 10s Code 63		ANSI/ASME B36.19M 40s Code 65		Weight [kg]
										ød	s	ød	s	ød	s	ød	s	
GEMÜ 611	10	10	3/8"	30	13.5	108	25	12.5		9.53	1.2	9.53	0.89	17.1	1.65	17.1	2.31	0.30
		15	1/2"	30	13.5	108	25	12.5		12.70	1.2	12.70	1.65	21.3	2.11	21.3	2.77	0.30
		20	3/4"	30	13.5	108	25	12.5		19.05	1.2	19.05	1.65	-	-	-	-	0.30
GEMÜ 671	25	15	1/2"	40	13.5	120	25	13.0	19.0	-	-	-	-	21.3	2.11	21.3	2.77	0.62
		20	3/4"	40	13.5	120	25	16.0	19.0	19.05	1.2	19.05	1.65	26.7	2.11	26.7	2.87	0.58
		25	1"	40	13.5	120	25	19.0	19.0	-	-	25.40	1.65	33.4	2.77	33.4	3.38	0.55
	40	32	1 1/4"	68	13.5	153	25	24.0	26.0	-	-	-	-	42.2	2.77	42.2	3.56	1.45
		40	1 1/2"	75	13.5	153	25	26.0	26.0	-	-	38.10	1.65	48.3	2.77	48.3	3.68	1.32
	50	50	2"	90	13.5	173	30	32.0	32.0	-	-	50.80	1.65	60.3	2.77	60.3	3.91	2.25
		65	2 1/2"	-	-	173	30	-	34.0	-	-	63.50	1.65	-	-	-	-	2.10
	80	65	2 1/2"	-	-	216	30	-	62.0	-	-	63.50	1.65	73.0	3.05	73.0	5.16	8.60
		80	3"	-	-	254	30	-	62.0	-	-	76.20	1.65	88.9	3.05	88.9	5.49	8.00
	100	100	4"	-	-	305	30	-	76.0	-	-	101.60	2.11	114.3	3.05	114.3	6.02	24.10

* only for investment cast design ** only for forged design MG = diaphragm size
For materials see overview on page 13



Body dimensions [mm]

Threaded sockets, connection code 1 Valve body material: brass (code 12), investment casting (code 37)

Typ	MG	DN	R	Material code 12						Material code 37						Weight [kg]
				H	H1	t	L	SW2	Number of flats	H	H1	t	L	SW2	Number of flats	
GEMÜ 611	10	12	G 3/8	23	11	13	55	22	2	25	13	12	55	22	2	0.17
		15	G 1/2	29	14	15	75	25	2	30	15	15	68	27	2	0.26

MG = diaphragm size For materials see overview on page 13

Threaded sockets, connection code 1 Valve body material: GG25 (code 8), investment casting (code 37)

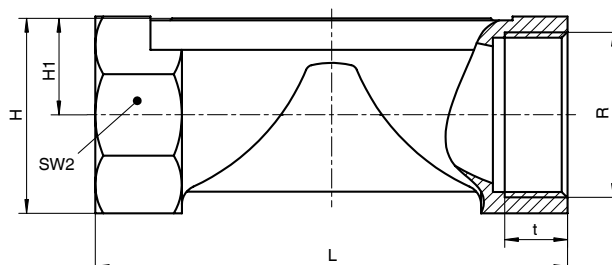
Typ	MG	DN	R	Material code 8						Material code 37						Weight [kg]
				H	H1	t	L	SW2	Number of flats	H	H1	t	L	SW2	Number of flats	
GEMÜ 671	25	15	G 1/2	35	19	12	85	32	6	29	16	15	85	27	6	0.32
		20	G 3/4	40	19	13	85	41	6	32	16	16	85	32	6	0.34
		25	G 1	42	19	16	110	46	6	37	16	13	110	41	6	0.39
	40	32	G 1 1/4	56	28	16	120	55	6	49	24	20	120	50	8	0.88
		40	G 1 1/2	61	28	18	140	65	6	52	24	18	140	55	8	0.93
		50	G 2	73	35	18	165	75	6	68	33	26	165	70	8	1.56

MG = diaphragm size For materials see overview on page 13

Threaded sockets, connection code 31 Valve body material: investment casting (code 37)

Typ	MG	DN	R	H	H1	t	L	SW2	Number of flats	Weight [kg]
GEMÜ 671	25	15	NPT 1/2	29	16	14	85	27	6	0.32
		20	NPT 3/4	32	16	14	85	32	6	0.34
		25	NPT 1	42	21	17	110	41	6	0.39
	40	32	NPT 1 1/4	49	24	17	120	50	8	0.88
		40	NPT 1 1/2	52	24	17	140	55	8	0.93
		50	NPT 2	68	33	18	165	70	8	1.56

MG = diaphragm size



Body dimensions [mm]

Threaded connections, connection code 6, 62 Valve body material: investment casting (code 34), forged body (code 40)

Type	MG	DN	H1*	H1**	f*	øg*	ød1	Thread to DIN 405 R	Code 6 L	Code 62 L	Weight [kg]
GEMÜ 611	10	10	12.5	-	30.0	13.5	10.0	RD 28 x 1/8	118	116	0.33
		15	12.5	-	30.0	13.5	16.0	RD 34 x 1/8	118	116	0.35
GEMÜ 671	25	15	13.0	19.0	40.0	13.5	16.0	RD 34 x 1/8	118	116	0.71
		20	16.0	19.0	40.0	13.5	20.0	RD 44 x 1/6	118	114	0.78
		25	19.0	19.0	40.0	13.5	26.0	RD 52 x 1/6	128	127	0.79
	40	32	24.0	26.0	68.0	13.5	32.0	RD 58 x 1/6	147	147	1.66
		40	26.0	26.0	75.0	13.5	38.0	RD 65 x 1/6	160	160	1.62
	50	50	32.0	32.0	90.0	13.5	50.0	RD 78 x 1/6	191	191	2.70
	80	65	-	62.0	-	-	-	RD 95 x 1/6	246	246	9.22
		80	-	62.0	-	-	-	RD 110 x 1/4	256	256	9.20

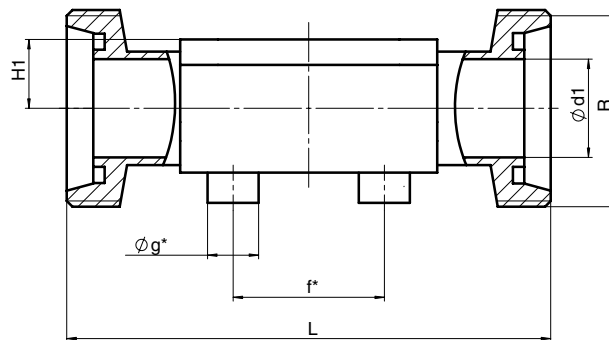
* only for investment cast design

** only for forged design

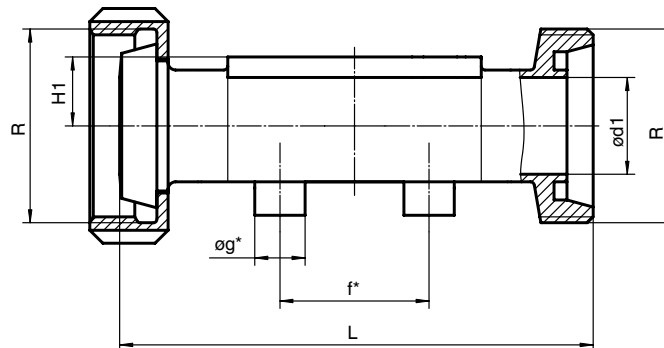
MG = diaphragm size

For materials see overview on page 13

Code 6



Code 62



Body dimensions [mm]

Flanges - DIN EN 1092, connection code 8 Valve body material: GGG 40.3 (code 17, 18), 1.4435 (code 34, 40), 1.4408 (code 39)

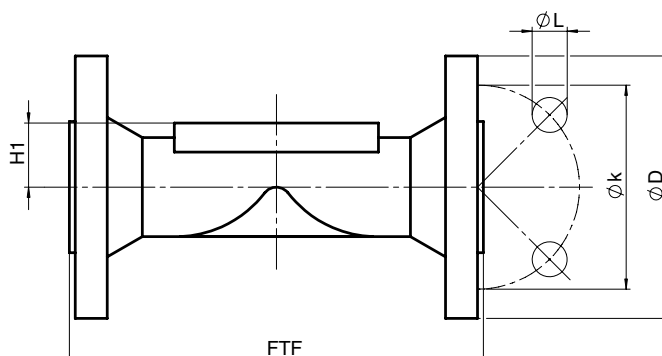
Type	MG	DN	øD	øk	øL	Number of bolts	H1			FTF	Weight [kg]
							Material code 17, 18, 39	Material code 34	Material code 40		
GEMÜ 671	25	15	95	65	14	4	18.0	13.0	19.0	130*	1.85
		20	105	75	14	4	20.5	16.0	19.0	150	2.35
		25	115	85	14	4	23.0	19.0	19.0	160	2.85
	40	32	140	100	19	4	28.7	24.0	26.0	180	4.90
		40	150	110	19	4	33.0	26.0	26.0	200	5.65
	50	50	165	125	19	4	39.0	32.0	32.0	230	7.45
	80	65	185	145	19	4	51.0	-	62.0	290	10.20
		80	200	160	19	8	59.5	-	62.0	310	14.20
	100	100	220	180	19	8	73.0	-	76.0	350	21.00

*Material code 34, 40 FTF = 150 (no DIN length) MG = diaphragm size
For materials see overview on page 13

Flanges - ANSI Class 125/150 RF, connection code 38, 39 Valve body material: GGG 40.3 (code 17, 18), 1.4435 (code 34, 40), 1.4408 (code 39)

Type	MG	DN	øD	øk	øL	Number of bolts	H1			FTF		Weight [kg]
							Material code 17, 18, 39	Material code 34	Material code 40	Connection code 38	Connection code 39	
GEMÜ 671	25	15	90	60.3	15.9	4	18.0	13.0	19.0	-	130	1.85
		20	100	69.9	15.9	4	20.5	16.0	19.0	146	150	2.35
		25	110	79.4	15.9	4	23.0	19.0	19.0	146	160	2.85
	40	32	115	88.9	15.9	4	28.7	24.0	26.0	-	180	4.90
		40	125	98.4	15.9	4	33.0	26.0	26.0	175	200	5.65
	50	50	150	120.7	19.0	4	39.0	32.0	32.0	200	230	7.45
	80	65	180	139.7	19.0	4	51.0	-	62.0	226	290	10.20
		80	190	152.4	19.0	4	59.5	-	62.0	260	310	14.20
	100	100	230	190.5	19.0	8	73.0	-	76.0	327	350	21.00

MG = diaphragm size For materials see overview on page 13

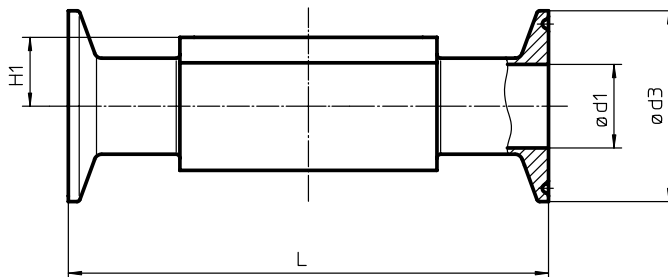


Body dimensions [mm]

Clamp connections, connection code 80, 82, 88, 8A, 8E
Valve body material: forged body (code 40, F4)

Type	MG	DN	NPS	H1	for pipe ASME BPE Code 80			for pipe EN ISO 1127 Code 82			for pipe ASME BPE Code 88			for pipe DIN 11850 Code 8A			for pipe SMS 3008 Code 8E			Weight [kg]
					ød1	ød3	L	ød1	ød3	L	ød1	ød3	L	ød1	ød3	L	ød1	ød3	L	
GEMÜ 611	10	10	3/8"	12.5	-	-	-	14.0	25.0	108	-	-	-	10	34.0	108	-	-	-	0.30
		15	1/2"	12.5	9.40	25.0	88.9	18.1	50.5	108	9.40	25.0	108	16	34.0	108	-	-	-	0.43
		20	3/4"	12.5	15.75	25.0	101.6	-	-	-	15.75	25.0	117	-	-	-	-	-	-	0.43
GEMÜ 671	25	15	1/2"	19.0	-	-	-	18.1	50.5	108	-	-	-	16	34.0	108	-	-	-	0.75
		20	3/4"	19.0	15.75	25.0	101.6	23.7	50.5	117	15.75	25.0	117	20	34.0	117	-	-	-	0.71
		25	1"	19.0	22.10	50.5	114.3	29.7	50.5	127	22.10	50.5	127	26	50.5	127	22.6	50.5	127	0.63
	40	32	1 1/4"	26.0	-	-	-	38.4	64.0	146	-	-	-	32	50.5	146	31.3	50.5	146	1.62
		40	1 1/2"	26.0	34.80	50.5	139.7	44.3	64.0	159	34.80	50.5	159	38	50.5	159	35.6	50.5	159	1.50
	50	50	2"	32.0	47.50	64.0	158.8	56.3	77.5	190	47.50	64.0	190	50	64.0	190	48.6	64.0	190	2.50
		65	2 1/2"	34.0	60.20	77.5	193.8	-	-	-	60.20	77.5	216	-	-	-	60.3	77.5	216	2.30
	80	65	2 1/2"	62.0	60.20	77.5	193.8	72.1	91.0	216	60.20	77.5	216	66	91.0	216	60.3	77.5	216	8.90
		80	3"	62.0	72.90	91.0	222.3	84.3	106.0	254	72.90	91.0	254	81	106.0	254	72.9	91.0	254	8.50
		100	4"	76.0	97.38	119.0	292.1	109.7	130.0	305	97.38	119.0	305	100	119.0	305	97.6	119.0	305	24.80

MG = diaphragm size



Overview of valve bodies for GEMÜ 611, 671

		Spigots																								
	Connection code	0		16		17		18		1A	1B	35		36	37		55		59		60		63	65		
		Material code		34	40	34	40	34	40	34	40	40	40	34	40	40	34	40	34	40	34	40	34	40	40	40
		MG	DN																							
GEMÜ 611	10	10	-	-	X	X	X	X	X	X	X	X	-	-	X	-	-	-	X	-	X	X	X	X	X	
		12	-	-	-	-	-	-	-	-	-	-	-	-	-	-	-	-	-	-	-	-	-	-	-	
		15	X	X	X	X	X	X	X	X	X	X	-	-	X	-	-	X	X	-	X	X	X	X	X	
		20	-	-	-	-	-	-	-	-	-	-	-	-	-	-	-	X	X	X	X	-	-	-	-	
GEMÜ 671	25	15	X	X	X	X	X	X	-	X	X	X	-	-	X	-	-	-	-	-	X	X	X	X		
		20	X	X	X	X	X	X	-	X	X	X	-	-	X	-	-	X	X	X	X	X	X	X		
		25	X	X	X	X	X	X	X	X	X	X	X	X	X	X	X	-	-	X	X	X	X	X		
	40	32	X	X	X	X	X	X	X	X	X	X	X	X	X	X	X	-	-	-	-	X	X	X		
		40	X	X	X	X	X	X	X	X	X	X	X	X	X	X	X	-	-	X	X	X	X	X		
	50	50	X	X	X	X	X	X	X	X	X	X	X	X	X	X	X	-	-	X	X	X	X	X		
		65	-	-	-	-	-	-	-	-	-	-	-	X	-	-	X	-	-	-	X	-	-	-		
	80	65	-	-	-	-	-	X	-	-	X	X	-	X	X	-	X	-	-	-	X	-	X	X		
		80	-	-	-	-	-	X	-	-	X	X	-	X	X	-	X	-	-	-	X	-	X	X		
	100	100	-	-	-	-	-	X*	-	-	X*	X*	-	X*	X*	-	X*	-	-	-	X*	-	X*	X*		

* Valve bodies are not suitable for use with diaphragm code 5E.

X = Standard

MG = diaphragm size

Availability of material code 32: same as code 34, availability of material code 42, F4: same as code 40

		Threaded connections								Clamps					Flanges													
	Connection code	1		31	6		62		80	82	88	8A	8E	8				38			39							
		Material code		8	12	37	37	34	40	34	40	40	40	40	40	17	18	34	39	40	17	18	39	17	18	34	39	40
		MG	DN																									
GEMÜ 611	10	10	-	-	-	-	W	W	W	W	-	K	-	K	-	-	-	-	-	-	-	-	-	-				
		12	-	X	X	-	-	-	-	-	-	-	-	-	-	-	-	-	-	-	-	-	-	-				
		15	-	X	X	-	W	W	W	W	K	W	K	K	-	-	-	-	-	-	-	-	-	-				
		20	-	-	-	-	-	-	-	-	K	-	K	-	-	-	-	-	-	-	-	-	-	-				
GEMÜ 671	25	15	X	-	X	X	W	W	W	W	-	W	-	K	-	X	X	W	X	W	-	-	-	X	X	W	X	W
		20	X	-	X	X	W	W	W	W	K	K	K	K	-	X	X	W	X	W	X	X**	X	X	X	W	X	W
		25	X	-	X	X	W	W	W	W	K	K	K	K	K	X	X	W	X	W	X	X**	X	X	X	W	X	W
	40	32	X	-	X	X	W	W	W	W	-	W	-	K	K	X	X	W	X	W	-	-	-	X	X	W	X	W
		40	X	-	X	X	W	W	W	W	K	W	K	K	K	X	X	W	X	W	X	X**	X	X	X	W	X	W
	50	50	X	-	X	X	W	W	W	W	K	W	K	K	K	X	X	W	X	W	X	X**	X	X	X	W	X	W
		65	-	-	-	-	-	-	-	-	W	-	W	-	W	-	-	-	-	-	-	-	-	-	-	-	-	-
	80	65	-	-	-	-	-	W	-	W	K	K	K	K	K	-	-	-	-	W	-	-	-	-	-	-	-	W
		80	-	-	-	-	-	W	-	W	K	W	K	W	K	X	X	-	X	W	X	X**	X	X	X	-	X	W
	100	100	-	-	-	-	-	-	-	-	W*	W*	W*	W*	W*	X	X	-	X	W*	X	X**	X	X	X	-	X	W*

* Valve bodies are not suitable for use with diaphragm code 5E.

** Connection code 38 / material code 18 on request

X = Standard

K = Connections completely machined (not welded)

W = Welded construction

Availability of material code 32: same as code 34, availability of material code 42, F4: same as code 40

MG = diaphragm size

For further metal diaphragm valves, accessories and other products,
please see our Product Range catalogue and Price List. Contact GEMÜ.

GEMÜ® VALVES, MEASUREMENT
AND CONTROL SYSTEMS

