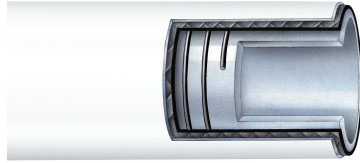


# Rubber Fab

a Garlock Hygienic Technologies company

## RFTFP TUF-FLEX®



*Smoothbore PTFE Lined Hose with Synthetic Plies and Stainless Steel Wire Helix*

**TUBE:** Seamless white PTFE

**COVER:** White silicone

**REINFORCEMENT:** Synthetic plies and stainless steel wire helix

**TEMPERATURE:** -40°F to 300°F

Part Number	Hose ID Inch	Hose OD Inch	Bend Radius Inch	Max. Working Pressure @ 70°F psig	Vacuum Rating @ 70°F in. Hg.	Weight Per Foot
08RFTFP	0.50	0.94	1.77	150	FULL	0.31
12RFTFP	0.75	1.18	2.76	150	FULL	0.41
16RFTFP	1.00	1.42	3.54	150	FULL	0.51
24RFTFP	1.50	1.97	5.51	105	FULL	0.84
32RFTFP	2.00	2.44	7.09	105	FULL	1.07

Rubber Fab recommends a Rubber Fab factory crimp for this product.

### Features

- Extreme flexibility
- Superior cleanability
- Excellent thermal properties
- Ultra smooth bacteria free tube
- Static grounding available
- Resistant to repetitive dynamic cycling
- Autoclavable
- Phthalate free

### Applications

- Load cell
- CIP/SIP cleaning
- Filling equipment
- Sampling systems
- Dosing and filling machines
- Fermentation lines
- Food and beverage processing
- Pharmaceutical processing
- Chemical transfer

### Hose Certifications

- USP Class VI
- FDA 21 CFR 177.1550
- 3-A Sanitary Standards



26 Brookfield Drive • Sparta, New Jersey 07871

973.579.2959 • 866-442-2959 Toll Free • 973.579.7275 Fax • [www.rubberfab.com](http://www.rubberfab.com)