

POSITIVE DISPLACEMENT PUMP
FRISTAM FKL



Stop rebuilding, replacing, and spending your valuable time on other PD pumps. Fristam's FKL pump simply runs better and lasts longer. The FKL's large diameter shaft, balanced rotors, and heavy-duty gearbox ensure that it is the most durable sanitary positive displacement pump available. It is rated for up to 500 PSI standard.

The FKL is the industry's first close-clearance PD pump to be designed for true CIP: the cover and rotors remain in place for cleaning.

- 11 Models
- Max. Discharge Pressure 500 psi (35 bar)
- Max. Flow Rate 600 gpm (224 m³/hr)
- Max. Viscosity 1,000,000 cps

POSITIVE DISPLACEMENT PUMP
FRISTAM FKL COP



We've taken the toughest, most durable sanitary positive displacement pump and optimized it for those who need to strip clean their pumps daily or between batches.

Robust design and construction allow for elevated pressure and longer life, while tight internal clearances provide high efficiency.

Oiling seals and faces; components make assembly and disassembly simple. In fact, there are only three parts to seal each shaft.

- 7 Models
- Max. Discharge Pressure 500 psi (35 bar)
- Max. Flow Rate 445 gpm (100 m³/hr)
- Max. Viscosity 1,000,000 cps

POSITIVE DISPLACEMENT PUMP
FRISTAM FDS

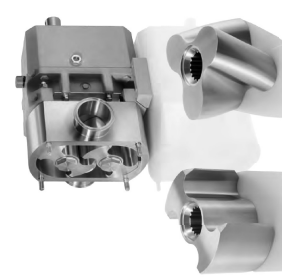


The versatile FDS Twin Screw pump provides quick yet gentle product handling of delicate and shear sensitive products, as well as exceptional suction for pulling thick or viscous products. It is virtually pulsation-free and can pump large particulates and entrained air.

The combination of particularly large bearings and an increased bearing distance results in impressive stability even with high axial forces and high speeds.

- 5 Models
- Max. Discharge Pressure 363 psi (25 bar)
- Max. Flow Rate 793 gpm (180 m³/hr)
- Max. Viscosity 1,000,000 cps

POSITIVE DISPLACEMENT PUMP
FRISTAM FL2/FL3



Fristam FL positive displacement pumps handle products gently and efficiently and are completely CIP/SIPable.

Fristam's FL2 Series pumps use a proven design to provide gentle product handling, complete cleanability, high efficiencies, and ease of maintenance.

The FL2 delivers an almost perfectly steady product output with low pulsation. Its highly balanced rotating body design allows the pumps to be at high speeds to facilitate high transfer capacity and effective CIP.

- 6 Models
- Max. Discharge Pressure 170 psi (11.7 bar)
- Max. Flow Rate 380 gpm (86 m³/hr)
- Max. Viscosity 100,000 cps

SHEAR BLENDER
FRISTAM FS/FSI



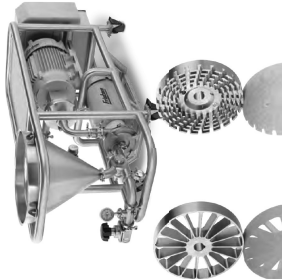
Fristam's FS Series Shear Blender for inline mixing, blends products quickly and consistently. Compared to conventional methods, the Shear Blender shortens processing times significantly.

The Shear Blender's rotor-stator design eliminates unblended product and prevents lumps and masses in product for consistent, repeatable results.

Fristam's FSJ Series Shear Pump is an impeller-style version of the Fristam FS, for applications requiring both pumping and mixing.

- 13 Models
- Max. Tip Speed 44 m/s
- Max. Flow Rate 375 gpm (85 m³/hr)
- Max. Viscosity 30,000 cps

POWDER/LIQUID MIXER
FRISTAM PM/PMV



The Fristam Powder Mixer provides quick, high-performance blending of wet and dry ingredients into a fluid stream. It incorporates the uniform powder induction of the FZX Liquid ring pump and thorough blending of the FS Shear Blender into a single, compact system. Powders can be wetted and dispersed on the first pass, dramatically reducing process times.

The PMV version features the FDS double screw pump in place of the FZX to handle even higher viscosity products.

- 7 Models
- Max. Induction Rate 600 lb/min (272 kg/min)
- Max. Flow Rate 350 gpm (80 m³/hr)
- Max. Viscosity 5,000 cps (1,000,000 cps PMV)

CENTRIFUGAL PUMP
FRISTAM FP/FPX



Fristam centrifugal pumps have long been the sanitary industry's benchmark for quality and performance.

Pedestal-mounted, the heavy-duty FP pump is ideally suited for vacuum withdrawal from evaporators, viscous, hot or abrasive products, and many other applications.

The FPX pump features the same high performance pump head as the FP. The FPX is the pump of choice for most industrial applications. Superior value is realized by its non-pedestal mounting style and the use of a single internal seal only.

- 24 Models
- Max. Discharge Pressure 180 psi (12.4 bar)
- Max. Flow Rate 900 gpm (204 m³/hr)
- Max. Viscosity 1,200 cps

CENTRIFUGAL PUMP
FRISTAM FPR

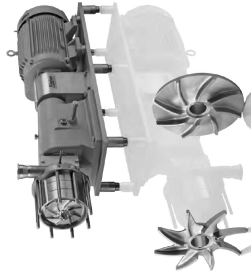


The Fristam FPR is a high performance sanitary centrifugal pump, that features a front-loading seal for service in place.

The Fristam FPR Series reduces maintenance time and effort. Designed with a front-loading seal, the FPR allows production personnel to service the pump in place—without special tools. FPR pumps have fewer parts, so processors have fewer maintenance parts to stock. FPR pumps handle flow rates up to 2,000 gpm.

- 24 Models
- Max. Discharge Pressure 195 psi (13.4 bar)
- Max. Flow Rate 2,000 gpm (450 m³/hr)
- Max. Viscosity 1,200 cps

HIGH-PRESSURE CENTRIFUGAL PUMP
FRISTAM FPH/FM



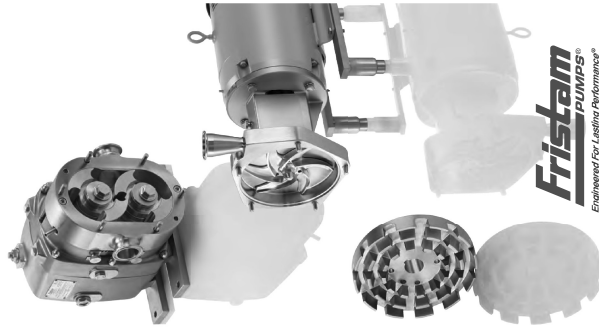
Fristam high-pressure centrifugal pumps are ideal for Reverse Osmosis (RO) Systems, Filtration/Ultrafiltration (UF), Pressure Feed, and Recirculation.

Capable of withstanding up to 1,000 PSI inlet pressure and available with up to four stages, the Fristam FM Series can be configured to meet your pressure and flow needs.

The FPH/FPM Series single-stage pumps supplement the capabilities of the FPH/FM Series pumps. The FPH handles inlet pressures up to 600 PSI, while the FPM models handle inlet pressures up to 1,000 PSI.

- Model FPH (3 Models FPH)
- Max. Discharge Pressure 1,250 psi (86 bar)
- Max. Flow Rate 750 gpm (170 m³/hr)
- Max. Viscosity 600 cps

LIQUID RING PUMP
FRISTAM FZX



The FZX liquid ring pump is ideal for handling products with entrained air.

By using a specially designed impeller and housing, the FZX maintains its prime when other pumps become air bound. This feature makes the FZX more efficient for complete evacuation of tanks and lines during normal process or CIP.

- 4 Models
- Max. Discharge Pressure 100 psi (7 bar)
- Max. Flow Rate 400 gpm (90 m³/hr)
- Max. Viscosity 5,000 cps

Fristam
PUMPS®
Engineered For Lasting Performance®

1 800 841 5301 | www.fristam.com/usa



Part #1050000302 | ©2018 Fristam Pumps USA